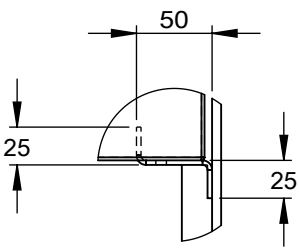
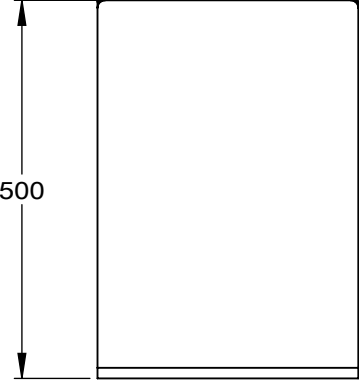


FRONT ELEVATION



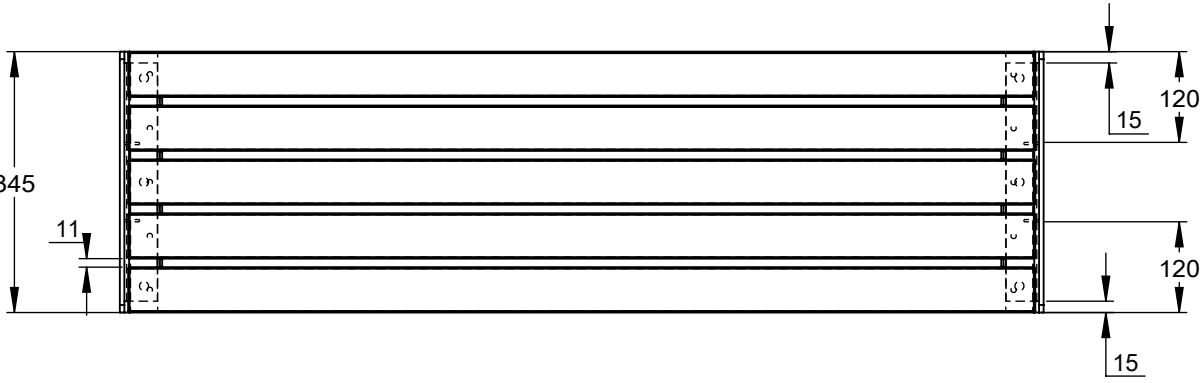
DETAIL A  
SCALE 1 : 5



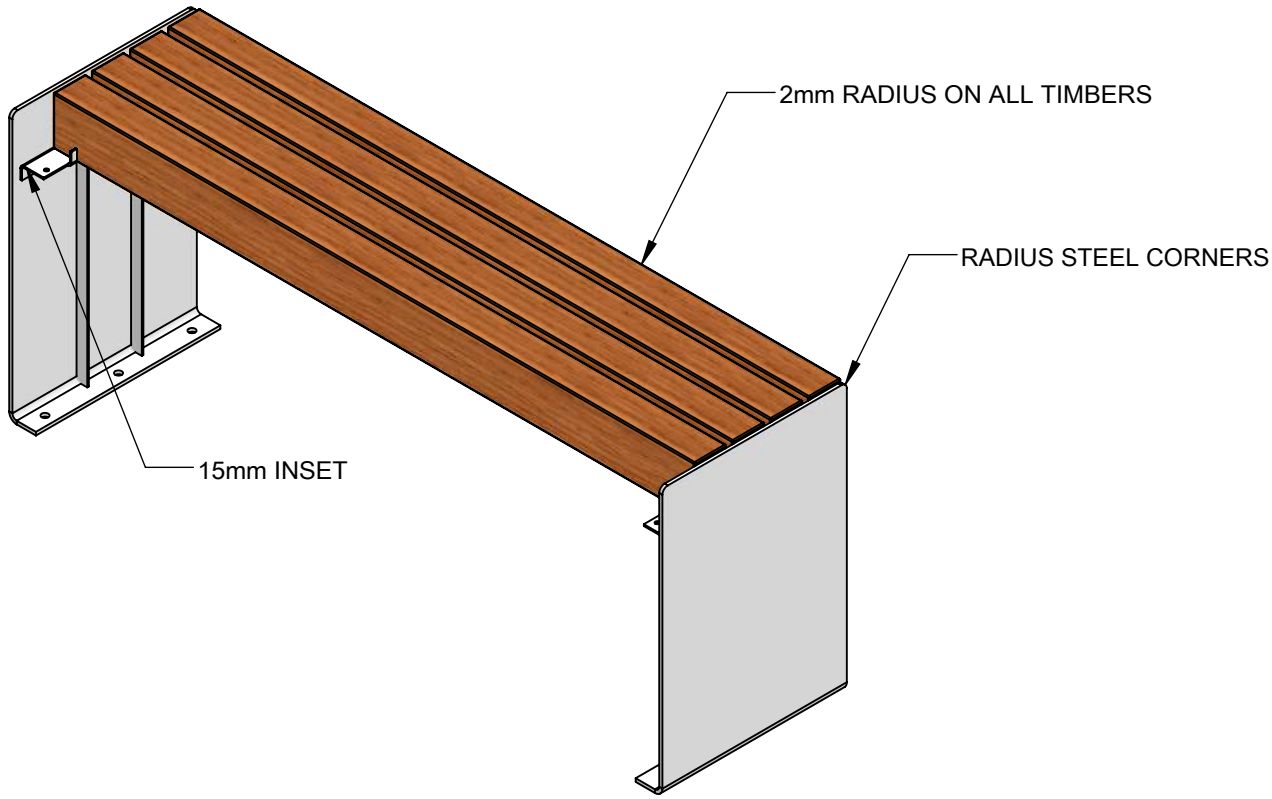
LEFT HAND ELEVATION

**GENERAL CONSTRUCTION NOTES**

- All Folding Tolerances are  $\pm 1.2\text{mm}$  with an angle variation of  $\pm 1^\circ$
- All Rolling Tolerances  $\pm 8\text{mm}$
- All Fabricated and Welded Components are Manufactured to a Tolerance of  $\pm 2\text{mm}$
- All Fabricated and Welded Corners are Manufactured to a Tolerance of  $\pm 5\text{mm}$  across a Diagonal Measurement
- Were powder coated components are applicable they are completed to the following specification:
  - Pre Treatment – Shot Blast SA 2.5
  - Primer – Zinc Rich primer with a minimum of 60um
  - Top Coat – Final Top coat to be a minimum of 60um
- All Timber finishes are supplied as un-treated
- All Cor-ten finishes are supplied as un-treated/un-weathered



PLAN



3D VIEW

VETRA 1	
• TOTAL WEIGHT = 40.47Kg	REV. A
Kinley 	